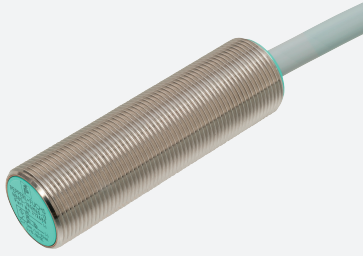


# Inductive analog sensor

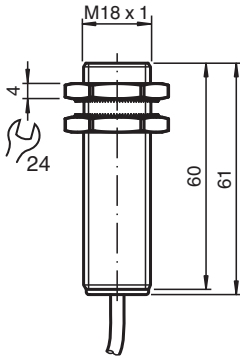
## NBB5-18GM60-I



- Inductive analog sensor
- Output 4 mA ... 20 mA
- Flush mounting



### Dimensions



### Technical Data

#### General specifications

Output type	Analog current output
Installation	flush
Output polarity	DC
Measuring range	1 ... 5 mm
Output type	3-wire

#### Nominal ratings

Operating voltage	$U_B$	10 ... 30 V DC typ. 20 V DC
Reverse polarity protection		yes
Repeat accuracy		0 ... 80 $\mu$ m
No-load supply current	$I_0$	$\leq$ 12 mA

#### Analog output

Output type	4 ... 20 mA
Slope of output characteristic	4 mA / mm
Linearity error	$\leq \pm 5$ % of full-scale value
Load resistor	$\leq$ 1000 $\Omega$ typ. 500 $\Omega$
Rate of current rise	
4 ... 20 mA	max. 30.9 A/s
20 ... 4 mA	max. 11.1 A/s
Recovery time	1 ... 10 ms , typ. 5 ms

Release date: 2025-02-27 Date of issue: 2025-02-27 Filename: 303098\_eng.pdf

Refer to "General Notes Relating to Pepperl+Fuchs Product Information".

Pepperl+Fuchs Group  
www.pepperl-fuchs.com

USA: +1 330 486 0001  
fa-info@us.pepperl-fuchs.com

Germany: +49 621 776 1111  
fa-info@de.pepperl-fuchs.com

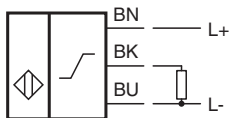
Singapore: +65 6779 9091  
fa-info@sg.pepperl-fuchs.com

 PEPPERL+FUCHS

## Technical Data

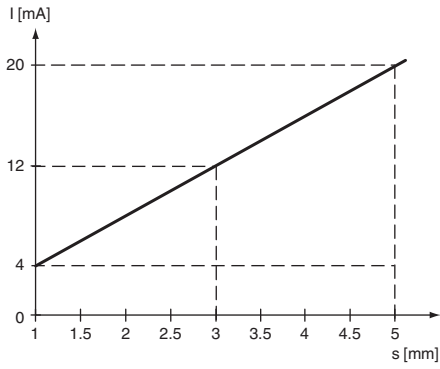
Adjustment tolerance zero point		$\leq \pm 5$ % of full-scale value
Temperature drift		$\leq \pm 0.15$ %/K of full-scale value
Residual ripple		$\pm 125$ $\mu$ A
<b>Compliance with standards and directives</b>		
Standard conformity		
Standards		EN IEC 60947-5-2
<b>Approvals and certificates</b>		
UL approval		cULus Listed, Class 2 Power Source
CCC approval		CCC approval / marking not required for products rated $\leq 36$ V
<b>Ambient conditions</b>		
Ambient temperature		-25 ... 70 °C (-13 ... 158 °F)
<b>Mechanical specifications</b>		
Connection type		cable
Housing material		brass, nickel-plated
Sensing face		PBT
Degree of protection		IP67
<b>Cable</b>		
Wire end ferrules		yes
Cable diameter		4.6 mm $\pm$ 0.2 mm
Bending radius		> 10 x cable diameter
Material		PVC
Color		grey
Number of cores		3
Core cross section		0.5 mm <sup>2</sup>
Length	L	2 m
<b>Dimensions</b>		
Length		60 mm
Diameter		18 mm

## Connection

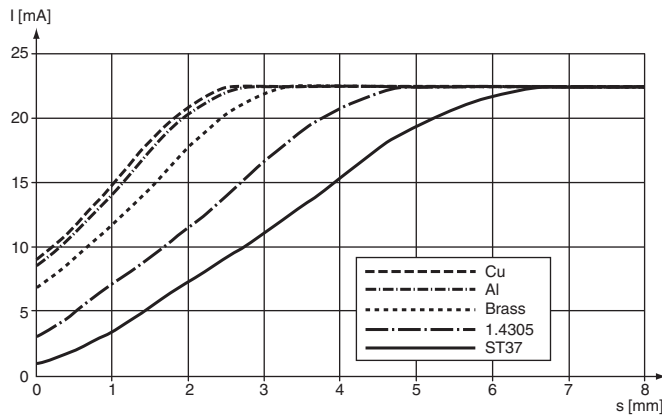


**Characteristic Curve**

**Output characteristics**



**Reduction factor**



Release date: 2025-02-27 Date of issue: 2025-02-27 Filename: 303098\_eng.pdf